



COLUMBIA
INTERNATIONAL
COLLEGE®
Hamilton, Ontario, Canada



Uniform Guide

To provide our students with safety, care and support. Columbia International College has a uniform policy that aligns with our high academic standards and enables our students to take pride in their school community.

Statement of Intent

Our CIC uniform identifies us as a community that takes pride in our school culture. Our uniform policy increases school safety, minimizes disruptions, easily identifies trespassers on CIC premises, and promotes improvement in student behaviour and decorum.

Purpose for School Uniform

Our CIC school uniform promotes equity and inclusion for all students. Regardless of a student's financial means or choice of personal clothing, all students are on equal footing wearing the same uniform.

The CIC student uniform helps to maintain a secure and safe school environment by reducing the risk of unauthorized persons entering the school premises.

Uniforms create a structured environment where students understand the importance of following rules and policies, much like the world of work when entering the workforce.

The school uniform also promotes discipline, minimizes distractions, and helps students stay focused on their academic success.

Policy

Uniform requirements

Students must be dressed in appropriate uniform and must meet the uniform standard.

Supervision of standards

All staff will be responsible for ensuring students are in compliance with our uniform requirements. All CIC staff will address uniform violations.

Infractions decision

The final determination as to whether any item of a student's uniform is acceptable remains at the sole discretion of the Principal or Vice Principal or his or her designate.

Consequences for breach of policy

Students not in proper uniform who claim the items are in residence will be sent back to residence at their own expense, in order to change clothing before returning to school.

All uniform items are available for purchase at our campus store.

CIC reserves the right to refuse access or services in the school or residence to any student that is not in uniform compliance with our Uniform and Dress Code Policy.

Uniform Items and the Expected Standard

All uniform items must be clean and orderly

Tops:

- Must be CIC Uniform items



Blazer



Oxford Shirt



Tie



Crewneck
Sweater



Vest



Fleece



Quarter Zip Up
October



T-Shirt For Physical
Education Class Only

Pants



Pants

- Must be CIC Uniform pants
- In a standing position the pant leg must be touching the top of the shoe.
- Cannot be rolled
- Cannot be tapered



Shorts / Pants For Physical
Education Class Only

Shoes and Socks



Socks

- Must be all black socks with no logos
- Must be above the ankle (no ankle socks)



All Black Shoes

We strongly recommend you purchase your own black shoes and socks before coming to school for your comfort and style preference. Students whose shoes and/or socks are not in compliance will be provided a pair from the Campus Store and charged accordingly.

May - October (Mandatory Monday Uniform) May also be worn Tuesday - Friday



Or



- CIC Oxford Blue Shirt must be tucked in at the waist
- CIC Vest or CIC Navy Blue Crew Neck (one of these must be worn over the Oxford shirt)
- CIC tie is optional



Or

- CIC Grey Uniform Pants
- Black socks no logo, must be above ankle
- All black casual or dress shoes

May - October Tuesday to Friday Uniform



Or



Or



Or



- CIC Polo Shirt
- CIC Navy Blue Crew Neck
- CIC Fleece
- CIC Quarter Zip Up



Or

- CIC Grey Uniform Pants
- Black socks no logo, must be above ankle
- All black casual or dress shoes
- Sole can't exceed 2 inches

Students are able to remove their blazer or vest and roll up their sleeves in the classroom or dining spaces when needed in hot weather.

October - May (Mandatory Monday Uniform) May also be worn Tuesday - Friday



Or



- CIC Blazer
- CIC Oxford Blue Shirt must be tucked in at the waist
- CIC tie
- CIC vest is optional



- CIC Grey Uniform Pants
- Black socks no logo, must be above ankle
- All black casual or dress shoes

October - May Tuesday to Friday Uniform



Or



Or



Or



Or



- CIC Polo Shirt
- CIC Oxford Blue Shirt must be tucked in at the waist
- CIC Vest or CIC Navy Blue Crew Neck or CIC Fleece or Quarter Zip Up (one of these must be worn over the Oxford shirt, or all white or all navy blue T-shirt with no logos)



- Black socks no logo, must be above ankle
- All black casual or dress shoes
- Sole can't exceed 2 inches

Expected Standard

Shoes

- All Black shoes must also have all black soles and all black laces.
- All Black logos

ACCEPTABLE SHOES



NOT PERMITTED



- Sole can't exceed 2 inches

Hair

- If choosing to dye your hair, the hair colour must be one single natural hair colour
- Hair extensions/braids must be the student's natural colour
- Only religious head coverings are permitted

Nails:

- Fingernails must be of a reasonable length of less than 1 inch from the cuticle

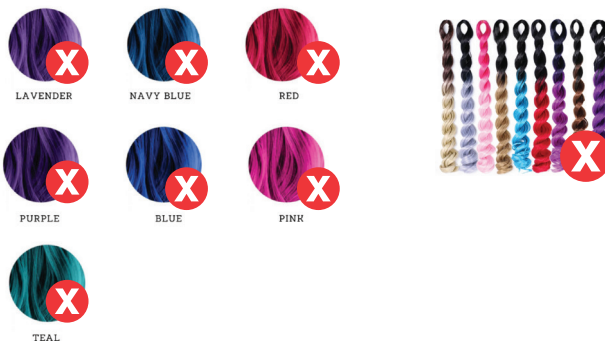


1 inch or shorter

Hair

- Hair Extension/braids length must not be below the waist
- No Duorags or hats in school
- No hair curlers in school

NOT PERMITTED



Nails:

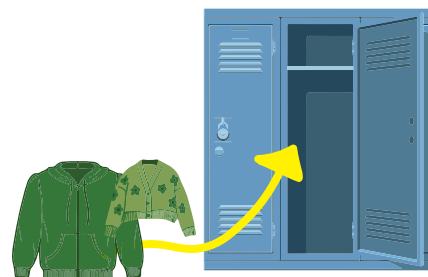
- Not exceeding 1 inch from the cuticle/ bottom of the natural nail

Piercing, Tattoos & Jewellery

| | |
|-----------|---|
| Piercing | No body piercing jewellery is permitted except for religious reasons, which requires permission from the Principal or Vice Principal. |
| Tattoos | Tattoos must be covered and can not be visible. |
| Jewellery | No spacers are permitted. No excessive jewellery as determined by the Principal or Vice Principal. |

Clothing worn over the uniform

- Any items of clothing worn over the uniform (hoodies, rain jackets, sweaters and coats) are to be kept in the student's personal locker and not worn within the school building
- Students must place clothing worn over the uniform (rain jacket, sweaters and coats) in the locker before beginning any activities which include breakfast, classes or extra-curricular activities. They must be in full uniform while in the hallways, entering the building, and when travelling between buildings.



Gym Uniform

| | |
|-------------------------|--|
| Upper Body | Only CIC uniform gym shirts (grey phys. ed t-shirt or blue phys. ed crew neck) are permitted. |
| Lower Body | Only CIC uniform gym shorts and/or CIC track pants are permitted. |
| Footwear | Any athletic shoe excluding soccer cleats, golf shoes, etc. are permitted. They must be non marking soles to protect our floor. |
| Head Gear/ Jewellery | <ul style="list-style-type: none">All long hair must be tied back.No hats indoors. Hats are permitted outside on hot sunny days.No other headgear permitted.No jewellery is permitted (for safety). |

In Residence

Uniform standards

Students are expected to dress appropriately while in residence common areas including:

- cafeterias
- student lounges
- recreation areas

Supervision of standards

All residence staff will be responsible for ensuring students are in compliance with our uniform standard.

Violations decision

The determination as to whether an article of attire or outfit is acceptable remains in the sole discretion of the Residence staff.

Unclaimed uniform items

Any unclaimed uniform items left behind in the residence room or school lockers at the end of the semester will be disposed of.

Consequences for breach of policy

Students who are discovered in inappropriate attire in the residence common areas may be directed to the Residence Director or Designate for the appropriate consequence, which may include progressive discipline set out in the Code of Conduct.